



# Acute Asthma Pathway

## Suspected acute asthma

Progressive worsening of asthma symptoms

- Breathlessness
- Wheeze
- Cough
- Chest tightness

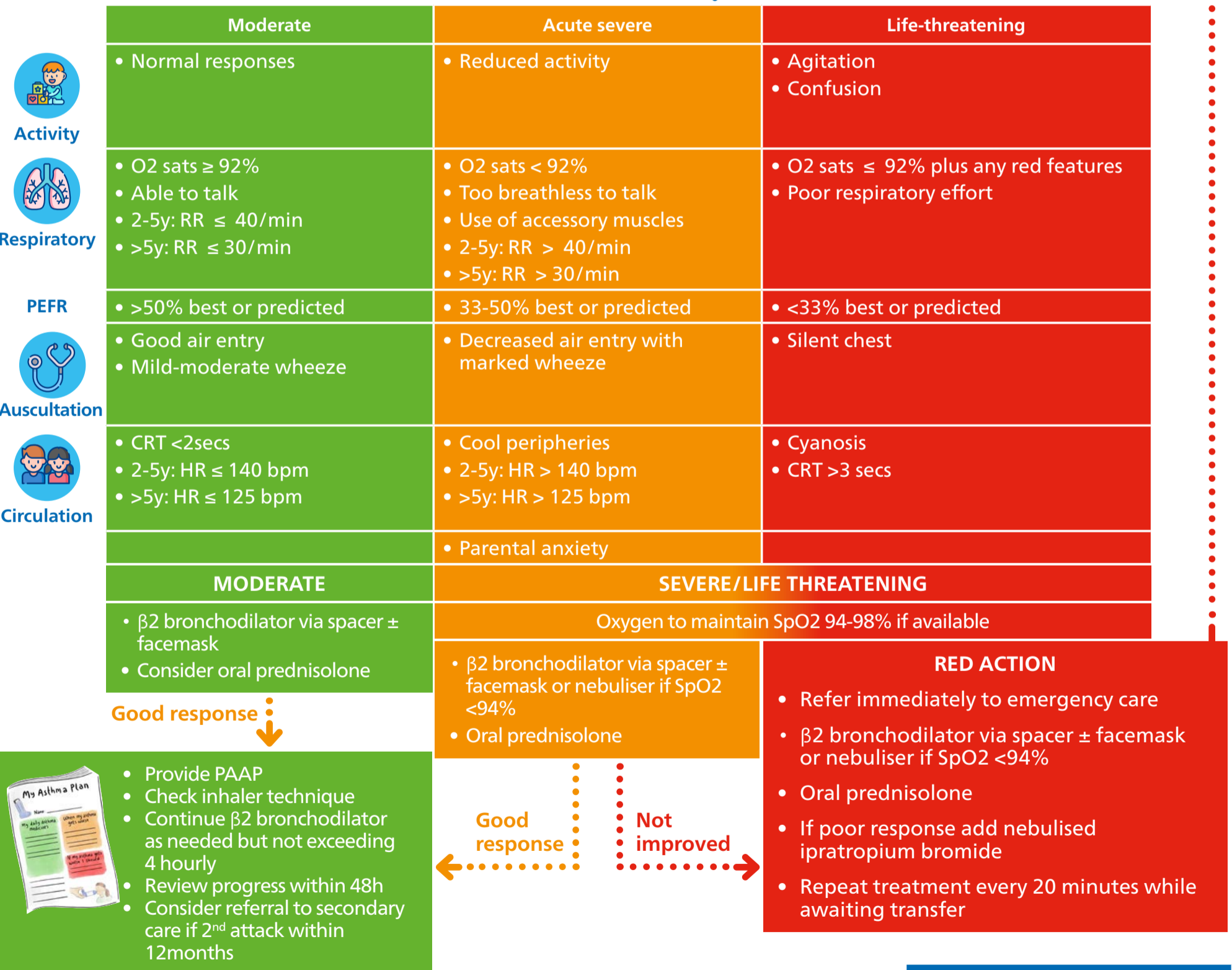
## Risk factors for severe disease

- Extremely low birth weight
- Prolonged NICU stay
- Congenital heart disease
- Previous severe attacks
- Attack in late afternoon, at night or early morning
- Representation within 1 month of acute episode
- Already on steroids or high doses ICS
- Food allergy
- Psychosocial stressors

Do the symptoms and/or signs suggest an **immediately life threatening (high risk) illness?**

Consider differentials;

- Pneumonia
- Epiglottitis
- Croup
- Hyperventilation
- Foreign body
- GORD
- Anaphylaxis



**Lower Threshold for admission if:**

- Attack in late afternoon or at night
- Recent hospital admission or previous severe attack
- Concern over social circumstances or ability to cope at home

**NB: If patient has signs and symptoms across categories, always treat according to their most severe features**

Acute Asthma Drug Dose		
Prednisolone (oral) 3 days	2-5y: 20mg 5-7y: 30-40mg	>7y: 40mg (1-2mg/kg per dose)
Salbutamol (nebs)	2-5y: 2.5mg >5y: 5mg	
Ipratropium Bromide (nebs)	2-11y: 250 micrograms 12-17y: 500 micrograms	